

NANCY ET METZ

UNIVERSITÉ DE LORRAINE



Richly diverse through its disciplines, Université de Lorraine pursues a wide range of international activities: in- and outbound student, PhD, academic and research staff, administrative staff exchanges; degree programs offered jointly with other institutions (including several Erasmus Mundus master's programs, co-tutelle, International joint labs, international & European research groups).

The university is a major force in the economic and social development of the region Grand Est and cross-boarder cooperation (Germany, Belgium and Luxembourg).

With five centuries of history, Université de Lorraine is also a pioneer in the collaboration between arts, technologies, and industry, as embodied today in innovative projects such as ARTEM, the Institut Jean Lamour, the Institut Lafayette, and the Biopôle, among others by crossing approaches to answer societal challenges.

◆ MAIN PROGRAMMES OF STUDY

Université de Lorraine has 43 academic departments, schools of engineering, and institutes. These are organized by field of study into colleges. 9 colleges span the range of disciplines offered at the university:

- Arts, letters, and languages
- Law, economics, and management
- Lorraine INP (engineering)
- Lorraine Management Innovation
- Interface
- Health
- Science and technology
- Humanities and social sciences
- Bachelor of Technology (8 university-affiliated institutes of applied sciences).

◆ RESEARCH

Research at Université de Lorraine is organized into 10 clusters:

- Agronomy, food-processing, forestry (A2F)

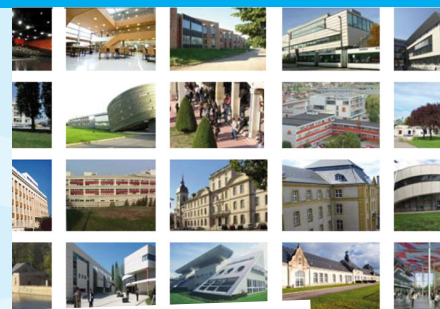
- Automatics, Maths, Computer Sciences and Interactions (AM2I)
- Biology, medicine, and health (BMS)
- Consciousness, language, communication, and society (CLCS)
- Molecular chemistry and physics (CPM)
- Energy, mechanics, processes, and products (EMPP)
- Matter, materials, metallurgy, and mechanics (M4)
- Observatory Earth and Environment of Lorraine (OTELo)
- Law, politics, economics, and management (SJPEG)
- Time, space, literature, and language (TELL)

◆ STRENGTHS

- Our research centers are active in all scientific fields (ARWU ranking), with areas of excellence emerging in the topics of: Natural resources, energy, and materials, mining engineering
Language and knowledge engineering, and
Molecular engineering and technologies for health.
- Intense partnerships with national public research organizations and with industry

◆ LOCATION

Located at one of Europe's busiest crossroads, Université de Lorraine is close to the borders of Germany, Belgium, and Luxembourg and just a 90 minutes train ride from Paris. Université de Lorraine is spread over a vast geographical area covering the Vosges (Epinal, Saint Dié), Meuse (Bar-le-Duc), Meurthe-et-Moselle (Nancy, Lunéville, Longwy), and Moselle (Metz, Forbach, Saint Avold, Sarreguemines, Thionville)



IDENTITY FORM

- ◆ **Precise name of the institution**
Université de Lorraine
- ◆ **Type of institution**
Public
- ◆ **City where the main campus is located**
Nancy et Metz
- ◆ **Number of students**
62 000
- ◆ **Percentage or number of international students**
15%
- ◆ **Type and level of qualifications awarded**
LMD - Other national diplomas: BUT, engineering (diplôme d'ingénieur), state-sanctioned medical and paramedical degrees
Institution-specific degrees: DU - Other degrees and diplomas: Certificate of qualification, preparation for national postsecondary teaching exam, specialized graduate diploma in health.
- ◆ **French language courses**
Yes - The Department of French as a Foreign Language offers a wide range of training in French culture and language in intensive courses, in the summer, or throughout the year. It prepares you for the DELF and the DALF. More information here: <http://defle.univ-lorraine.fr>
- ◆ **Programs for international students**
Yes
- ◆ **Programs in English**
Yes - 16 Master degrees
- ◆ **Registration fees/year (for information only)**
Université de Lorraine has adopted a policy of differentiated tuition fees for students from countries outside the European Union. Depending on your nationality, you will have to pay these differentiated tuition fees or you may benefit from a partial exemption. In any case, consult the Registration department of your host institution to find out the fee for your particular case. More information here: <https://welcome.univ-lorraine.fr/fr/droits-dinscription/>
- ◆ **Postal address**
34 Cours Léopold - CS 25233 - 54052 NANCY Cedex France

welcome.univ-lorraine.fr/en



Member of Campus France Forum



CAMPUS FRANCE