

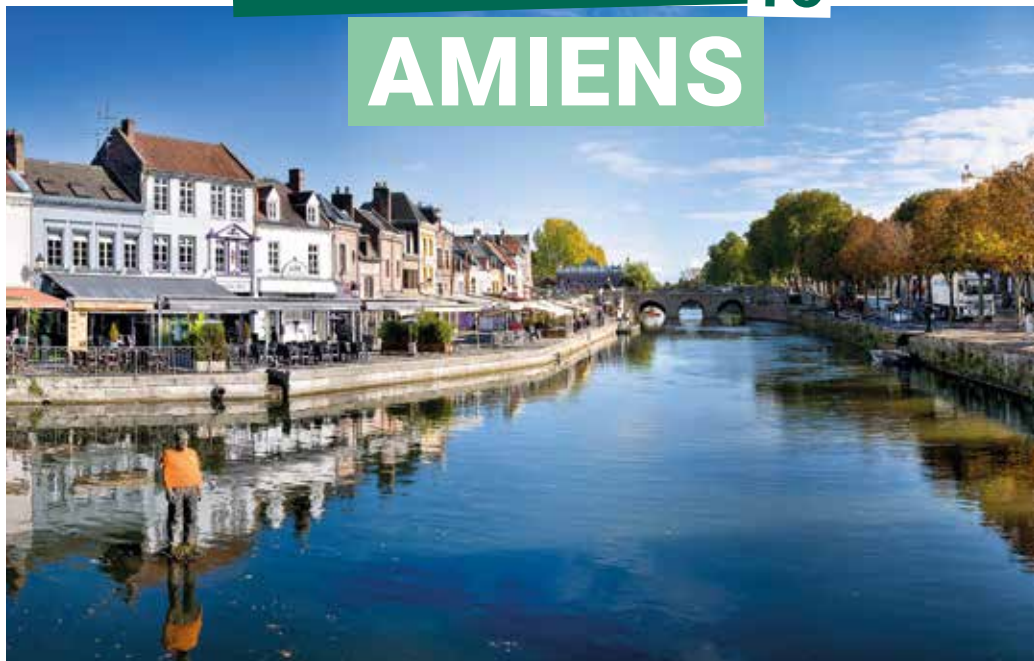


DISCOVER
YOUR CITY



Campus France will guide
you through your first steps in
France and **exploring Amiens**,
your new home.

WELCOME TO
AMIENS





YOUR ARRIVAL IN AMIENS /

Several programmes are available in your town to help you find your feet when you arrive.

These programmes, involving a wide range of partners, will help you with your administrative procedures and guide you upon arrival.

♦ Arriving at the Université de Picardie - Jules Verne (UPJV)

UPJV provides a Welcome Desk for international students from 28 August to 14 September, open Monday to Thursday from 9:30 to 12:30 and from 13:30 to 16:00 (closed on Fridays).

Address: 10 rue Frédéric Petit, 80000 Amiens.

The Welcome Desk will also be available on UPJV's various off-campus locations.

Contact: bienvenue@u-picardie.fr and 03 22 82 58 05

Address of the Direction des Relations Internationales (DRI - International Relations Office):

11 rue des Francs Mûriers, 80000 Amiens

Contact: 03 22 82 72 45 or dri@u-picardie.fr

For more information: www.u-picardie.fr/international

The Welcome Desk, which has been set up by numerous partners (in particular the City of Amiens, the Hauts-de-France Region and the CROUS) aims to help students who have moved to Amiens from abroad as "free movers" and provides support with administrative procedures and residence permits, as well as information about accommodation, health insurance, CAF (welfare) procedures, opening a bank account and more...

♦ Buddy System

You can be assisted by a local student in Amiens!

With the ESN Amiens Association (Erasmus Student Network), a the Buddy System can meet you and help you in all your procedures:

<http://amiens.ixesn.fr> and <https://buddysystem.eu/en/>

♦ Welcome and orientation for researchers and doctoral students

Researchers arriving in Amiens are welcomed and supported by Amiens Métropole, the metropolitan authority, and the Amiens Picardie CCI:

<http://www.accueil-mobilite.fr/>

The UPJV's Centre Euraxess offers scientists visiting from abroad a high-quality welcome and personalised support with procedures related to their entry into and stay in France:

<https://www.u-picardie.fr/international/le-centre-euraxess-de-l-upjv-627916.kjsp>

♦ Welcome and orientation in other institutions

If you are enrolled in another institution, please

consult the Campus France website for orientation. The site presents a series of **Information Sheets covering the different higher learning institutions:** <https://www.campusfrance.org> > Students > Documentary resources > Practical information for students and researchers > Reception arrangements in institutions

If you cannot find your school in this list, then go directly to their website.

• Every year, the whole city and relevant institutions organise a Journée d'Accueil des Étudiants d'Amiens (JAE - Welcome Day for Amiens Students), a major day of celebrations to help you get to know the city, on 14 September 2023.

♦ National Services

- students: www.etudiant.gouv.fr

- doctoral students, researchers: <http://www.euraxess.fr/fr>



Making you feel at home is a major concern for all French higher education institutions! The **Welcome to France label** is awarded to institutions that fulfil exacting criteria in the way they take care of their international students.



ACCOMMODATION

Finding somewhere to live is not always easy.

Rents are often high, and landlords require financial guarantees (such as a deposit).

Nevertheless, there is a wide range of accommodation on offer: halls of residence that are exclusively reserved for students and managed by the CROUS, student halls and private lodgings, rooms in private homes, flatshares...

The main thing is to start preparing for this as early as possible, before leaving your home country.



• **The Amiens Métropole site** inventories all student housing solutions (private residences): <https://www.amiens.fr> > Vivre à Amiens > Jeunesse > Etudier > Se loger

• **The CRIJ des Hauts-de-France** (Centre Régional d'Information Jeunesse), the regional youth information center publishes a Housing Guide which will simplify your installation:

<http://www.crij-hdf.fr> > Nos publications > Guide du logement

A FEW TIPS

◆ Short-term housing

- **The Amiens Youth Hostel** located near the city center (on the Nemo bus red line). Address: 30 square Friant les 4 Chênes, 80000 Amiens. Contact: 03 22 33 27 30. Site: <https://www.hifrance.org> > Auberge de jeunesse
- **Other hotel-residences:** use the search engine on the Amiens Tourist Office site which inventories all types of housing: <http://www.amiens-tourisme.com> > Tourinsoft > recherche > Hébergement

◆ Long-term housing

- **The CROUS** (Centre Régional des Œuvres Universitaires - Regional Center for University Services) **student housing for Amiens-Picardie**. Address: 5 rue Saint-Leu, 80000 Amiens. Hours:
 - September 1 to October 31: Monday to Friday, 8:30am to 5:00pm.
 - November 2 to August 31: Monday to Friday, 9am to 12:30pm and 1:30pm to 5pm.Contact: 09 69 36 19 19
Site: www.crous.amiens.fr
The website *Trouver un logement*: <https://trouverunlogement.lescrous.fr/>
- **Private sites for housing search**
You can also check out these specialized sites:
 - <https://www.adele.org> > résidence > agglomération > Amiens
 - <http://www.logement-etudiant.com/offre-de-logement/Amiens/liste.asp>
 - <https://www.location-etudiant.fr> > résidences étudiantes > Amiens
 - <https://housinganywhere.com/fr/s/Amiens-France>
- There is also a **site managed by the CROUS, Lokaviz, which includes a listing of student accommodations in private homes:** <https://www.lokaviz.fr/>
- **Shared Leases:** consult *La Carte des Colocs*, a national site for shared leases that's free and simple to use: <https://www.lacartedescolocs.fr/>
- **Other solutions available on the Campus France site:** www.campusfrance.org > Getting organized > Accommodation

◆ If you need a guarantor to secure your lodging

Visale is a new and free guarantor system: www.visale.fr

◆ If you want to file an application for APL funds (Aide Personnalisée au Logement, or personalized housing aid),

CAF (Caisse des Allocations Familiales) can check your eligibility: 32 30 or www.caf.fr

◆ If you need housing adapted to your special needs

Contact the CROUS Social Services which will take action with your institution. Some establishments have specialized services for students with disabilities (assistance for housing, and also transportation and tuition).

At University of Picardie - Jules Verne, contact the **Service for Special-Needs Students:**

<https://www.u-picardie.fr> > L'université > Handicap

GETTING AROUND AMIENS



There are many ways to get to Amiens: By train from the Paris Gare du Nord station (1 hour 15 minutes) or from Paris Charles de Gaulle airport by way of the Haute Picardie TGV train station. Travel to Amiens by bus or ride-sharing is also possible.
Trains: <https://www.oui.sncf/>
Bus: <https://www.flixbus.fr/voyages-car>
Ride-sharing: <https://www.blablacar.fr>

If you arrive at the Beauvais airport, take the Keolis Beauvais-Amiens bus (1 hour and 15 minutes).



In the city, use the Ametis network and its 16 bus lines (operates every day including holidays) at attractive, means-tested rates (from 0 to 25 €/month): <https://www.ametis.fr/>



For greater independence, use rental bikes: (€60/year):

- The Ametis bus network is completed with a bicycle service for both short- and long-term rentals, **Buscyclette**: <https://www.ametis.fr/buscyclette/>
- the local **Velam network**, bikes are available in 26 docking stations: <http://www.velam.amiens.fr>



For travel within the region, take the regional trains:

<https://www.ter.sncf.com/hauts-de-france>
Buses are also an option for low-cost travel: <https://fr.ouibus.com/> or <https://www.flixbus.fr/>

The CROUS, at your service everywhere

Do you need any help and/or advice, somewhere to eat or to live, a job - or do you just want to find out all there is to know about student life? Then the CROUS is what you need!



The CROUS (Centre Régional des Œuvres Universitaires et Scolaires - Regional Centre of University and School Services) has branches in all major French university towns.

It manages university halls of residence and canteens, allows you to meet social workers, and offers cultural activities and job opportunities.



FIRST THINGS FIRST /

ENROLLMENT IN YOUR INSTITUTION

◆ CVEC

Before you can enroll in your institution, you must download proof of payment of the Contribution Vie Etudiante et de Campus (CVEC) – the student and campus life contribution fee.

- Log in at: <https://cvec.etudiant.gouv.fr/>

- For additional information and special cases: <https://www.campusfrance.org> > Getting Organized > CVEC

◆ Confirm Registration

Take note! Even if you have a pre-registration letter, you are not officially enrolled.

You must confirm your enrollment with the institution's Service de la Scolarité (Admissions) as soon as you arrive.

RESIDENCE PERMITS

WHAT YOU NEED TO KNOW

• If you have just arrived in France on a long-term VLS-TS student visa: you must **validate it online as soon as you arrive in France**, on the ANEF (Administration numérique pour les Etrangers en France - Digital Administration for Foreigners in France) website. This validation must be carried out within the three months following your arrival: <https://administration-etrangers-en-france.interieur.gouv.fr/particuliers/#/>

• If you have Algerian citizenship or you are a student holding a “concours” visa or a visa bearing the mention “carte à solliciter dans les deux mois” (“card to be requested within two months”): your request for a residence permit must be carried out at the Préfecture.

• If you hold a “mineur scolarisé” (“minor in education”) visa and you have since attained your majority, you must request a residence permit directly on the ANEF website or at the *préfecture* of your place of residence within the two months following your attaining the age of legal majority: <https://administration-etrangers-en-france.interieur.gouv.fr/particuliers/#/>

Please note: if you wish to renew your residence permit or VLS-TS, you must make your request during the third month preceding the date of end of validity of your current residence permit, on the following website: <https://administration-etrangers-en-france.interieur.gouv.fr/particuliers/#/>

Please refer to the following tutorial for help with this procedure: https://www.youtube.com/watch?v=-iGha_yqN04

• Your institution's student support services can assist you in case of any difficulties.

To find out more about your rights and obligations: <https://www.service-public.fr/particuliers/vosdroits/N110>



PRACTICAL INFORMATION /

OPENING A BANK ACCOUNT

If you stay in France for more than 3 months, it will be much easier day-to-day if you open a bank account, **online or in one of the bank agencies located in Amiens.**

In France, opening a bank account is a right: www.service-public.fr > Argent > Comptes bancaires > Droit au compte

ACCESSING HEALTHCARE

Accessing healthcare in France is almost free, but you must be insured. **You must therefore be registered with the national health insurance programme.**

Please go to the <https://etudiant-etranger.ameli.fr> website to register, understand your rights and to carry out the requisite procedures.

Learn more:

<https://www.campusfrance.org> > Getting Organized > Health

As a student, you can also take advantage of the university medical services. That's the case for University of Picardie which has a Service de Santé Universitaire (SSU), or university health services.

In these health services where consultations are free, you'll be greeted by a team of medical professionals who can give you a health check-up and personalized advice in terms of health and prevention.

Addresses:

- Pôle Citadelle : 10, rue des Français Libres - 80000 Amiens

- Pôle Campus Sud : rue du Campus - 80025 Amiens Cedex 1

Contact: 03 64 26 83 25 or ssu@u-picardie.fr

Hours: Monday to Thursday, 8:30am to 5pm, Friday 8:30am to 4pm.

Site: <https://etudiants.u-picardie.fr> > Santé

In Amiens, there is also a multidisciplinary health care center, Espace Santé Maurice Ravel, where students can drop in with no appointments.

Address: 1 bis rue Maurice Ravel, 80000 Amiens.

Hours: by appointment.

Contact: 03 22 08 87 40

Site: <http://www.chu-amiens.fr> > Patients visiteurs >

Services et contacts > Espace Santé Maurice Ravel

Consultations de spécialités du CHUAP

TAKING OUT COMPLEMENTARY HEALTH INSURANCE ("MUTUELLE")

We recommend you take out complementary health insurance in order to cover the totality of your healthcare costs, which are not all covered by the compulsory and free national health insurance programme.

Please note: options and levels of insurance vary from one insurer to another. In order to choose the complementary insurance that is best adapted to your situation and your budget, you can access more information on a student "mutuelles" price comparison website.

HOUSING INSURANCE

In France, housing insurance is mandatory.

You can sign up for housing insurance called "garantie risques locatifs" - rental risk guarantee - at your bank or a private insurance company. Online subscription is often possible.

EMERGENCY NUMBERS

SAMU: Call 15 Emergency Medical Services

Police emergency: Call 17 in the event of violence, theft, robbery.

Fire Department: Call 18 in the event of fire, gas leak, water damage, natural catastrophe, or traffic accident.

Call 112: European emergency services number that's accessible from anywhere in the European Union in addition to the French numbers above.

LEARNING FRENCH

Learning French is an opportunity that's not to be missed! Find what works best for you:

- by consulting the Campus France site or the Français Langue Etrangère (FLE) - French as a foreign language - centers and universities which offer courses at all levels year-round:

<http://ecolesdete.campusfrance.org>

- by asking in your institution, at city hall, or in your host city's Maison des Associations - community centers.

FINDING A JOB OR WORK EXPERIENCE PLACEMENT

It is important that you have sufficient financial resources to come and study in France.

Working in France as a foreign student is possible within limits, namely for a maximum duration of 964 hours per year. This can therefore only be a way of earning **supplementary funds**.

Please note: to work in France, if you are not a citizen of the European Union, you must hold a valid **student residence permit**.

To help you find a job or work experience placement, 3 addresses:

• **the CRIJ des Hauts-de-France** (Centre Régional d'Information Jeunesse), the regional youth information center has a platform of job and internship offers: <http://www.crij-hdf.fr>

• **the Amiens-Métropole site** publishes want ads: <https://www.amiens.fr> > Vivre à Amiens > Emploi

• **the Jobaviz website, run by the CROUS**, can help you find a student job compatible with your studies: <http://www.jobaviz.fr>



GOING OUT IN AMIENS /

TAKE UP A SPORT

- Your school or university may offer privileged access to different sports activities:
Université de Picardie - Jules Verne offers sports activities for all students:
<https://etudiants.u-picardie.fr> > Sport
- **In the city of Amiens and its metropolitan area**, you will also find a complete selection of sports and recreation.
For more information:
- <https://www.amiens.fr> > Vivre à Amiens > Sport

BE ACTIVE

Attend cultural and sporting events, or join a social or community group, through one of the numerous local or national student clubs and associations. To learn more, check with your school (Service de la vie étudiante or Campus Life services) or visit the following sites: www.animafac.net or www.letudiant.fr

In Amiens, ESN, an association which welcomes international students, greets foreign students and helps them settle in:

<http://www.amiens.ixesn.fr/fr> et
www.facebook.com/ESNamiens/

You can also take a look at **AGORA, the Amiens Métropole directory of associations**
<https://www.maam.fr/annuaire> > Répertoires thématiques

The FAEP (*Fédération des associations des étudiants Picards – Federation of Picardie student associations*) can also assist you in finding events or help you manage your daily life through its free workshops. The programme is available at [facebook.com/FAEP](https://www.facebook.com/FAEP)

CULTURE AND NIGHTLIFE

- Amiens offers numerous opportunities for cultural events or partying. Theaters, museums, movie theaters, dance, and music are on the program and most of the time, at reduced cost for students: <https://www.amiens.fr>
> Vivre à Amiens > Culture Patrimoine
- **At Université de Picardie - Jules Verne**, the Service Culture develops partnerships with the city's other cultural structures to add to its programming and to offer students the best rates:
<https://etudiants.u-picardie.fr> > Culture
- **The university's Maison des Langues (Languages Center) and the ESN association organize a languages café every Wednesday night:**
<https://www.u-picardie.fr> > services communs > mdl

For entertainment or to pick up some culture, you can choose from:

- around 15 movie theaters (student rates, rewards card) including 2 art film houses, the Orson Welles and the Ciné Saint-Leu.
- 2 major museums, reduced rates for students: The Musée de Picardie and the Maison Jules Verne.
- 6 large performance halls for concerts, theater, dance, and opera: <https://www.amiens.fr> > Vivre à Amiens > Les événements
- About ten bookshops including an institution, the Librairie Martelle, and two used-book stores which buy and sell, Chapeau Melon et Piles de Livres and the Librairie Aléatoire.
- The Amiens Métropole area offers a network of 28 libraries including the Louis Aragon library:
<https://www.amiens.fr> > Vivre à Amiens > Culture Patrimoine > Lire
- In Amiens, for going out or staying abreast of events, read **the major regional daily newspaper, Le Courrier Picard**, available in newsstands or on the Internet: <http://www.courrier-picard.fr/>
You can also read **JDA, the Amiens-Métropole weekly information paper:**
<https://www.amiens.fr> > JDA



TOP ATTRACTIONS /

Amiens Métropole was awarded the label Pays d'Art et d'Histoire (Art and History Region) in 2015.

- The Jules Verne house, home of an important French author of the 19th century, and a precursor in science fiction literature.
- Notre Dame cathedral, the largest gothic building in France.
- The Saint-Leu neighborhood and its canals which earned Amiens the name, "Little Venice of the North".
- The Picardie Museum, with a large collection dating from prehistoric times to today.
- The Hortillonnages, for outings on small boats in the canals at the heart of flower and vegetable gardens.
- The Perret Tower, an example of modern 20th century architecture.
- The Amiens Zoo, near the city center.

To learn (and see) more, consult the Tourist Office website:
<http://www.amiens-tourisme.com> > La culturelle > Les incontournables



IMPORTANT ANNUAL EVENTS /

MARCH

- Safran'umeriques, the digital arts and new technologies festival (live entertainment, virtual immersions, and concerts, most often free).
- FAEP'STIVAL (student music showcase).

APRIL

- Réderie de Printemps, a huge flea market, the most important after Lille's, also organized in October.

JUNE

- Fête de la Musique with Music everywhere in town (free concerts).
- La Rue est à Amiens, an international festival for street art.
- On a Marché sur la Bulle, the Amiens graphic novel rendezvous.
- market on the Hortillonnages waterways (traditional market).
- "Minuit avant la nuit" festival in the Parc Saint Pierre (music festival).

JULY

- Festival International des Jardins Hortillonnages, contemporary art, walking or boat visits, from July to October.

AUGUST

- French "ballon au poing" championships, a typical Amiens-region team sport.

SEPTEMBER

- Journée d'Accueil des Étudiants (JAE), a day of welcome and orientation for arriving students. Every year, the city and its institutions welcome students for a festive day of discovery:
<https://www.facebook.com/JAE.Amiens/>
- Festitude, a student festival to mark the start of the year (cultural and sporting activities), offered by the CROUS and the UPJV, through to mid-October.
- Les Médiévales, a popular festival along the water.
- Journée Européenne du Patrimoine, European heritage days, with free visits to cultural sites.

OCTOBER

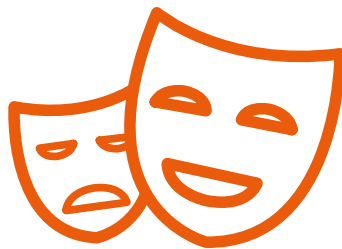
- **Science Festival** (in Amiens with over 1000 researchers in 33 research units).
- **Students of the World Night, a big welcome night for international students** in the Amiens City Hall.

NOVEMBER - DECEMBER

- Amiens International Film Festival.
- Spectacle Chroma (Chroma show) at Notre-Dame cathedral (light show on the façade, also takes place during the summer).
- Christmas Market, the largest event of the type in the north of France.

For more information:

<http://www.amiens-tourisme.com> > La festive > Grands évènements



& SHARE
PARTICIPATE

To stay informed and attuned to others and the world, to share and dialogue with students, follow **social media** where Campus France has an especially strong presence!

*Don't forget to join the **France Alumni** network. Take part in discussion groups on various subjects, take advantage of cultural outings, and consult job and internship offers.*



THINGS TO KNOW

Amiens Metropolitan area:

180,000 residents

Amiens city:

134,000 residents

**2nd CITY IN THE REGION, European
Youth Capital in 2020**

AMIENS,

ADMINISTRATIVE
CAPITAL OF SOMME,
one of the 5 departments
which make up the
Hauts-de-France Region

**HAUTS-DE-
FRANCE
REGION,**

5th FRENCH REGION
in terms of hosting
foreign students
(21,000 international
students)

**Université de Picardie -
Jules Verne:**

24,000 students

including **15%** international students
35 research centers, **2** doctoral schools



**AMIENS RANKED AMONG FRENCH CITIES WHERE IT'S GOOD TO LIVE
AND STUDY (awarded by L'Étudiant magazine) WITH A GOOD SCORE FOR THE
QUALITY OF STUDENT LIFE**

Most of the information presented in the Campus France City Information Sheets concerns all international students regardless of their institution.

In France, in each of the host cities, most foreign students study at universities. Accordingly, the City Information Sheets attach great importance to them without overlooking the other higher education institutions even if it is not possible to list them all here with their specific information.

For more information on the institutions' welcomes and orientations:

<https://www.campusfrance.org/fr/recherche/categorie/hauts-de-france-555>

CAMPUS FRANCE

28 rue de la Grange aux Belles, 75010 PARIS - 01 40 40 58 58 - www.campusfrance.org